



Dogs and Ebola Virus

Yes, dogs can spread it

United All Breed Registry 888-908-9299

Originally published by email October 14, 2014

Last week, despite a petition with 400,000 signatures, health authorities in Madrid, Spain euthanized the dog belonging to Ebola patient and nurse Teresa Romero Ramos.



Excalibur

Officials feared that the dog could have contracted Ebola from his owner, and could potentially pass the virus to other humans. Let's look at the facts about the transmission of Ebola between dogs and humans.

Many health care workers risked their lives for months in 2009 to conduct a study in West Africa that is now the best information we have on the subject. There's a link to the whole report at the bottom of this story, if you would like to read it.

They tested 439 dogs from various villages and towns where an active Ebola outbreak was in progress. Most of the dogs in these areas are not fed by their owners, they scavenge for food. Often they eat from the disposed carcasses of the "bush meat" that their owners ate. Both humans and their dogs appear to have contracted Ebola from handling those carcasses. (The original source of Ebola is thought to be bats, but it has spread to many wild animals in Africa.)

For reasons unknown, dogs that get Ebola are not affected by it. They show no symptoms and do not become sick or die. They DO, however, have the ability to pass the virus to humans or other animals via saliva, blood, urine, feces, etc.

So can your dog get Ebola? Certainly. Can you get it from your dog? Absolutely. Can other domesticated animals get Ebola? Yes. In Africa it has been found in guinea pigs, goats and horses. Like dogs, they were asymptomatic. We could not find any data on cats and Ebola.

The West African study concluded that "given the frequency of contact between humans and domestic dogs, canine Ebola infection must be considered as a potential risk factor for human infection and virus spread. Human infection could occur through licking, biting or grooming. Asymptomatically infected dogs could be a potential source of human Ebola outbreaks and of virus spread during human outbreaks, which could explain some epidemiologically unrelated human cases." They go on to say that dogs may have been the main source of 72 Ebola outbreaks in various parts of Africa in the past 30 years, the sources of which were as yet unknown.



The Deadly Ebola

Like the AIDS/HIV virus, Ebola is fairly difficult to get and easy to kill. But it also kills easily. So it is classified as extremely dangerous. To date, there is no evidence that it has ever been transmitted through the air; health care workers are said to be at risk only because of the bodily fluids they are in contact with. However, coughed up blood or sputum, or splashed fluids, pose a danger, so attendants must wear nose, mouth and eye protection when with patients. In lab tests, the virus dies within minutes on a hard surface. Kept in a cold, dark place, and

encased in a bodily fluid (or petri dish) it can live up to two months.

Ebola virus dies in contact with 3% acetic acid, 1% glutaraldehyde, alcohol-based products, or normal dilutions (1:10 - 1:100) of 5.25% household bleach. For health care centers, the Center for Disease Control currently recommends "any EPA registered hospital disinfectant with label claims for non-enveloped viruses (e.g. norovirus, rotavirus, adenovirus, poliovirus)."

Sophisticated medical care, sanitation and food preparation practices in the United States and other developed nations make the chances of an Ebola outbreak extremely low. In West Africa, they are battling the largest and deadliest outbreak in history, struggling to contain it with very limited resources. For now, please keep West Africans and their health care workers in your prayers, and keep washing your hands.

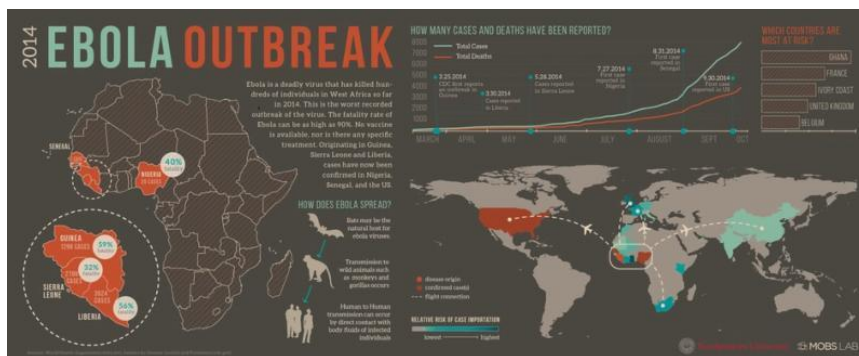
Links:

[Report: Ebola Antibody Prevalence in Dogs and Human Risk](#)

[CDC on Ebola](#)

[EPA Registered Disinfectants](#)

[10 Essential Facts about Ebola](#)



Infographic: Current update on the extent of the outbreak.

[Click to view larger.](#)